

Introduction

American Innovations (AI) is pleased to announce version 1.6 of our Pipeline Compliance System Axis® (PCS Axis®) software. This document identifies improvements available in PCS Axis 1.6. For questions or additional information, contact PCS Technical Support at pcstechservices@aiworldwide.com.

PCS Axis Improvements

Software enhancements and fixes available in PCS Axis 1.6 include those described in the following paragraphs:

PCS Axis Upgrade Installation

- The upgrade process now copies forward the existing connection settings file set up in *Connection Manager* when upgrading PCS Axis to v1.6 and higher. Manually copying the file to the desktop prior to upgrading PCS Axis is no longer required.
- The upgrade process for v1.5 to v1.6 and higher automatically uninstalls v1.5. Manually uninstalling v1.5 is no longer required. Upgrading a version previous to v1.5 does however require uninstalling the older version of PCS Axis.

Field and UDF Customizations

- *On/Off Pair UDF*: Type of UDF that allows you to set up a custom pair of on/off fields for recording inspection readings in a data grid or form. This type of UDF is available for both facility and continuous surveys.
- *Summation UDF*: Type of UDF that performs an aggregation on one or more fields set up as a filter in the *Summation UDF*. Aggregate functions include *Average*, *Count*, *Latest*, *Maximum*, *Minimum*, and *Sum*. This type of UDF is a *Permanent Information* field available for use in data grids, forms, reports, and as a filter in scheduling.

Bridge

- *Prevalidate, Run, Import, Export*: Clicking *Prevalidate* in the *Bridge Definition* window validates the Bridge definition is set up correctly. The validation process only validates data; it does not import or export data. Clicking *Run, Import, or Export* in the *Bridge Definition* window processes the definition by importing or exporting data based on the setup of Bridge definition.
- *Bridge Import*: Check boxes are no longer enabled by default for all "Activate" fields in a Bridge import.

Synchronization / Subscription

A message displays when starting a PCS Axis subscription that identifies the last time the subscription synchronized with the publication database

CPDM Rectifier Data Grid

The following fields are no longer "read-only" and can be edited: shunt rating, resistance, factor, and rectifier rating.

Release History

PCS Axis v1.5 Release:

Software enhancements and fixes available in PCS Axis 1.5 include those described in the following paragraphs:

PCS Axis Installation File

The PCS Axis installation file has been updated to include the following features:

- Separate installation files are no longer required to install PCS Axis on a 32-bit and 64-bit computer system. A single installation file now installs PCS Axis on either computer system.
- If the target computer does not have Microsoft® .NET Framework v4.0 installed, the PCS Axis installation automatically installs it. This feature requires an active Internet connection to complete the installation of .NET Framework v4.0.

Reindex Stored Procedure

A stored procedure labeled *dbo.DefragmentIndexes* installs in the PCS Axis database during the v1.5 upgrade installation. The stored procedure is intended for your company's Database Administrator (DBA). The DBA will use the stored procedure to create a database maintenance job on the database server that runs daily or once a week during non-peak hours. The purpose of the stored procedure is to ensure optimum system performance by rebuilding indexes in the PCS Axis database that have exceeded the "fill factor limit". For more information, refer to document entitled *PCS Axis v1.5 Upgrade Installation*.

Fill Factor Reset Script (optional utility)

A process included in the stored procedure mentioned earlier sets the "fill factor limit" of the PCS Axis database on the server. The "fill factor limit" can however be changed if required. Included on the PCS Axis v1.5 installation DVD is an optional utility script intended for your company's DBA. The DBA can use the utility script labeled *Defrag Fill Factor Reset Post Deployment.SQL* to set the "fill factor limit" of the PCS Axis database.

Data Entry Forms

PCS Axis supports data entry forms migrated from PCS 7.5 or higher. A forms editor will be available in a future software release that allows you to create and edit data entry forms.

Custom Security Roles (Security Role Management)

A security role is a named set of permissions that determine user access to menus and menu commands in PCS Axis. Use the security roles installed with PCS Axis (SysAdmin, User, and Read Only) as a template to create custom security roles. Then modify a custom security role based on the requirements of your company. You can modify custom security roles to include permissions that grant or deny user access to one or more PCS Axis menus and menu commands.

Bridge Import

Supports the following logical/boolean format variables: yes/no; true/false; and 0/1 (zero/one).

Reports/Graphs

PCS Inspection Graph: Include facility survey and continuous survey data in the same graph. Use the graph report to easily compare survey data in one or more surveys with data from other surveys.

Email Report Default Time (Email Notification)

When adding a new Email Report, you can either set up the report to use the default “Time” setting (which is based on the system Options property setting “Email Default Time”) or enter a different time. The “Time” setting determines when an email is sent with the Email Report as an attachment.

Synchronization

Subscription and Bridge License Message: Activate the Bridge license on the publication database first, and then synchronize subscription databases with the publication database. This process activates Bridge for operation on subscription databases. A message displays in the Job Service Console to this effect when a subscription database needs to activate Bridge via synchronization with the publication database (Tools > Job Service Viewer).

Database Management

- Database Integrity Check: In the unlikely event data becomes corrupted in the database, use Database Integrity Check to identify and resolve instances of data inconsistencies. The process performs an audit of the database searching for issues that may prevent PCS Axis from loading or performing basic functions. Its purpose is to clean up data issues that may cause problems for users, such as orphan records and invalid hierarchy nodes. (File > Database Integrity Check).
- Reindex Database: The PCS Axis database uses indexes to identify the position of each record in the database. As you add and delete records, PCS Axis modifies the appropriate index to reflect new record positions. The Reindex Database process restores database efficiency by updating indexes.

IMPORTANT: Before running Reindex Database, it is recommended that you make a backup of the PCS Axis database using Microsoft SQL Server Management Studio (SSMS). For more information about SSMS, see the AI document entitled *PCS Axis Database Backup and Restore*.

PCS Axis Help

- Help Window: The Help window is independent of the PCS Axis application. Users can continue to work in PCS Axis while viewing a contextual help topic. Contextual help is available by clicking the help button in any PCS Axis window.
- New Help Features: Two versions of PCS Axis Help are available for use. Both contain the same information. The default version is used in the PCS Axis application when viewing contextual help topics. The alternate version includes support for the following new features and is available for use at <http://www.pcsaxishelp.aiworldwide.com/AxisHelp/>.
 - Discussion System: Support for Disqus is available in the alternate version of PCS Axis Help. Disqus is a discussion system that allows users to post feedback, questions, or comments about PCS Axis. PCS Technical Services moderates the discussion system providing answers to questions and replies to comments. For more information about the discussion system, visit the Disqus website at <http://help.disqus.com/>.
 - Language Translation: The alternate version of help supports language translation using Google Translate. To view PCS Axis Help in your language, click the globe icon in the menu bar and then select a language. Google Translate supports over 60 different languages. For more information about Google Translate, visit <https://support.google.com/translate/>.

PCS Axis v1.4.5 Release:

PCS Axis v1.4.5 is intended to optimize system performance by reducing database index fragmentation. Index fragmentation may occur in the PCS Axis database after importing large amounts of data using *Bridge Import*, *Bullhorn Bridge*, or *Field Computer*.

Enhancements described in the following list are intended for your company's Database Administrator (DBA). These enhancements should be applied to the PCS Axis database on the server after upgrading to v1.4.5. For related information, refer to the document entitled *PCS Axis v1.4.5 Upgrade Installation*.

- **Fill Factor Reset Script:** A utility script labeled *Defrag Fill Factor Reset Post Deployment.SQL* is included on the PCS Axis v1.4.5 installation DVD. Running the script resets the "fill factor limit" on the database server to 70 percent. Run the utility script only once and do not include it in a database maintenance job on the server.
- **Reindex Stored Procedure:** A stored procedure labeled *dbo.DefragmentIndexes* installs in the PCS Axis database during the v1.4.5 upgrade installation. The purpose of the stored procedure is to rebuild indexes in the PCS Axis database that have exceeded the "fill factor limit". To ensure optimum system performance, use the stored procedure to create a database maintenance job on the database server that runs daily or once a week during non-peak hours.

PCS Axis v1.4 Release:

Performance

Improved performance system-wide with significant improvements in Bridge, Hierarchy Selection, and User Management performance.

User Interface

Improved user interface for better usability.

PCS Axis v1.3 Release:

Connection Manager

Connection Manager is a utility that installs during the PCS Axis software installation. You can use Connection Manager to switch database connections; upgrade a PCS Axis database; and create a new database, such as a training database (*Start > PCS Axis > Connection Manager*).

Job Service Viewer

Job Service Viewer provides two functions. One allows you to activate the optional Bridge Import add-on while the other provides status information for the following PCS Axis jobs: Bridge Import, Bridge Export, Bridge Import/Export, Email Notification, and Field Computer Receive. Status information identifies which of these jobs are currently running; those that are waiting in the queue to run; and a history of completed jobs (*Tools > Job Service Viewer*).

Pipeline Series

Pipeline Series is a feature that allows you to adjust facility numbers on a pipeline when discontinuities occur. Discontinuities can occur when an extension is added to the pipeline; the pipeline is re-routed; or when a company designates two pipelines as parallel lines. Instead of physically renumbering pipeline location numbers on-site, Pipeline Series allows you to shift pipeline numbering in PCS Axis. Each Pipeline Series joins together, end-to-end, to make up the entire pipeline. The starting and ending milepost for each segment in a Pipeline Series is used by PCS Axis to calculate a Relative Milepost for the entire distance of the pipeline (*Data Entry > Pipeline Series*).

System Options

- **Disable Link Attachments:** This system option applies when attaching a document to a record in a data grid. When the option is enabled, a document can be embedded but not linked to a record. A copy of an embedded document stores in the PCS Axis database and can be accessed by all PCS Axis users. A linked document stores on the local computer of the user who linked the document and can only be accessed by that user. If your company prefers that users embed documents instead of linking to documents, enable this option by clicking the check box. A check mark inside the check box indicates the option is enabled (*Tools > Options > General*).
- **Disable Synchronization:** This system option allows you to disable the synchronization feature. When disabled, the Synchronization menu command is not included in the Tools menu, which prevents creating the publication and subscription databases. You can however activate Synchronization at anytime if your company decides later to use the feature (*Tools > Options > Synchronization*).
- **Disable Attached Document Preview:** This system option applies to documents that have previously been attached to a record in a data grid. When the option is enabled, users are unable to preview an attached document in the *Preview Attached Documents* window. When the option is disabled, users can open an attached document for editing or viewing purposes if the file type of the attached document is associated with a default software program on their computer (*Tools > Options > General*).

Synchronization / Server Authentication Mode

Creating the publisher and subscriber databases now requires that you identify the authentication mode used by the server to validate user names and passwords for users connecting to the server. Based on how your company has set up the server, the authentication mode is either *Windows Authentication* or *Sql Server Authentication*. If needed, contact your company's IT department to determine which authentication mode to select when creating the PCS Axis publisher and subscriber databases (*Tools > Synchronization*).

Bridge Import

- License Activation: If your company purchased the optional Bridge Import add-on, activate the feature for operation using Job Service Viewer to select the license file provided by American Innovations (*Tools > Job Service Viewer*).
- Pipeline Series: Improvements in Bridge Import allow you to import pipeline series. Bridge Import includes a new data item labeled Series that is available for selection in the System Items folder when adding data items for mapping. Adding the Series data item provides the following PCS Axis fields required for mapping pipeline series: *ROW Code*, *Series Number*, *Start Milepost*, and *End Milepost*. These same fields must also be included in the import transition file you use to import data in PCS Axis.

Reports/Graphs

- Data Collection Report: The data collection report is a blank report used by technicians and vendors to record survey readings in the field. It is available for selection in all modules except ISM. The report uses a columnar report style and includes survey information by module, such as the CPDM Data Collection Report. Based on the survey type selected when setting up the report, it includes a list of facilities and other optional data, such as previous survey readings (*Reports/Graphs > Module Reports > Data Collection Report*).
- Summary Report Layout Theme: A layout theme is a group of named settings saved for later use. You can now define a Summary layout theme with report settings that define the table row, column, and data fields as well as the aggregate functions (average, sum, count, and percentage) used to calculate data fields in a Summary report. Summation fields, field operators, filters, drilldown fields, drilldown sorting fields, horizontal and vertical field groupings, as well as paper settings can all be saved in a Summary layout theme. A Summary report presents data in a cross tab table view. It provides a "big picture" of pipeline and facility data by summarizing and analyzing the data. You can control how PCS Axis summarizes the data, for example by sum, average, count, or percentage. Using a Summary report can help with analyzing data, making comparisons, and detecting patterns in the pipeline system (*Reports/Graphs > PCS, Module, or ROW Report > Customize > Summary Layouts*).

PCS Axis v1.2 Release:

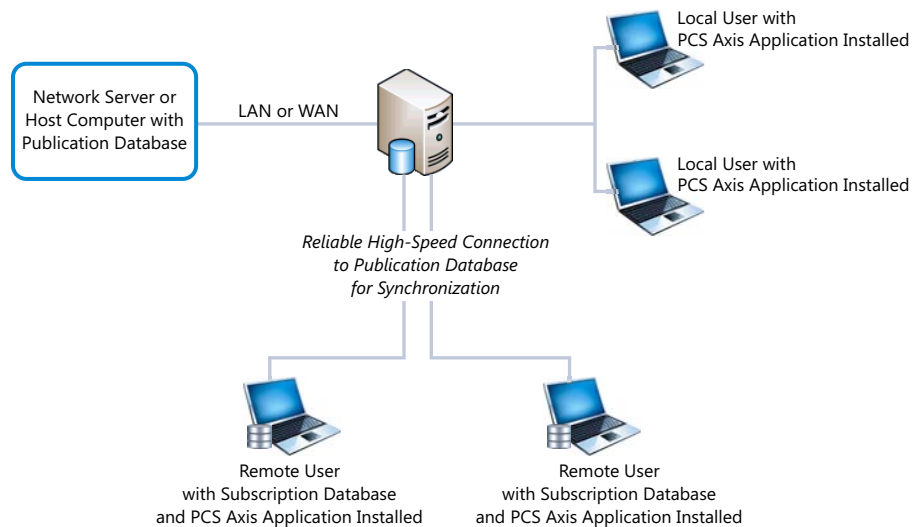
Synchronization (Tools menu)

PCS Axis Synchronization uses a Microsoft SQL Server publisher/subscriber database model. The Publication database is the primary database on a network server or host computer. Each Subscription database is a copy of the Publication database. Remote users who do not have access to the Publication database can update data in a Subscription database on their local computer.

Synchronization supports one publisher with multiple subscribers running in a client-server network. Synchronizing data between the publisher and subscribers is achieved using merge/pull replication. Merge replication is used with the publisher database. Pull replication is used with subscriber databases.

Features of Synchronization include:

- Creating the Publication database (primary PCS Axis database).
- Setting up one or more subscribers (remote users).
- Synchronizing and re-initializing a Subscription database.
- Switching database connections at a subscriber.



PCS Axis v1.1 Release:

■ Indirect Survey Manager (ISM)

(Modules > Indirect Survey Manager)

ISM includes the following features for working with continuous survey data:

- Data Entry Grid and Themes
(Data Entry > Edit ISM Data)
- Survey Folders and Themes
(Data Entry > Survey Folder Maintenance)
- Reports, Graphs, and Themes
(Reports/Graphs menu)

ISM reports and graphs include: CIS Reports (Close Interval Survey Reports); AC CIS Reports (AC Close Interval Survey Reports); DCVG Reports (DC Voltage Gradient Reports); ACVG Reports (AC Voltage Gradient Reports); ACCA Reports (AC Current Attenuation Reports); Soil Resistivity Reports; and Pearson Reports.

- User Defined Fields
(Tools > Field and UDF Customizations > Continuous Surveys)
- Field Computer and Themes
(Field Computer > Send, Receive)
- Themes Management
(Tools > Themes Management; Tools > Facility Type Themes)

■ Custom Module Management (CMM)

(Modules > Custom Module Management)

CMM is an optional add-on available for purchase. CMM allows users to work with facility types not included with PCS Axis by creating a user defined module with up to six user defined facility types. CMM includes the following features:

- Data Entry Grid and Themes
(Data Entry > Edit <module> Data)
- Survey Folders and Themes
(Data Entry > Survey Folder Maintenance)
- Schedules, Routes, and Themes
(Data Entry > Define Schedules, Edit Schedule Settings and Data Entry > Define Routes)
- Reports, Graphs, and Themes
(Reports/Graphs menu)
- User Defined Fields
(Tools > Field and UDF Customizations)
- Themes Management
(Tools > Themes Management and Tools > Facility Type Themes)

- **Email Notification**

(Tools > Email Notification)

Email Notification is a feature for sending columnar reports as an attachment in an email at a regularly scheduled time to recipients. Recipients include PCS Axis users as well as non-PCS Axis users.

- **Field Computer**

(Field Computer menu)

Send and receive continuous survey data for use in the ISM module.

Product Support and Training

If you have a suggestion, question, feature request, or a bug to report-your feedback would be appreciated. Also if you have a training need for your organization or would like to know more about upcoming PCS Axis training classes, use any of the following contact information to reach PCS Technical Services:

Support E-mail:pcstechservices@aiworldwide.com

Support Telephone:1-800-229-3404 (select 1, then press 2)

American Innovations:<http://www.aiworldwide.com>